

# My Wire Will Cross But Nothing Else- What Now?

Robert F. Riley, MD, MS, FACC, FAHA, FSCAI

Research and Medical Director, Complex Coronary Therapeutics Program

The Christ Hospital Heart Health System



**SCAI**

Society for Cardiovascular  
Angiography & Interventions

# Disclosures

Advisory Board, Consultant, Speakers' Board, and Honoraria for:

- Medtronic
- Boston Scientific
- Asahi



**SCAI**

Society for Cardiovascular  
Angiography & Interventions

# Case Presentation

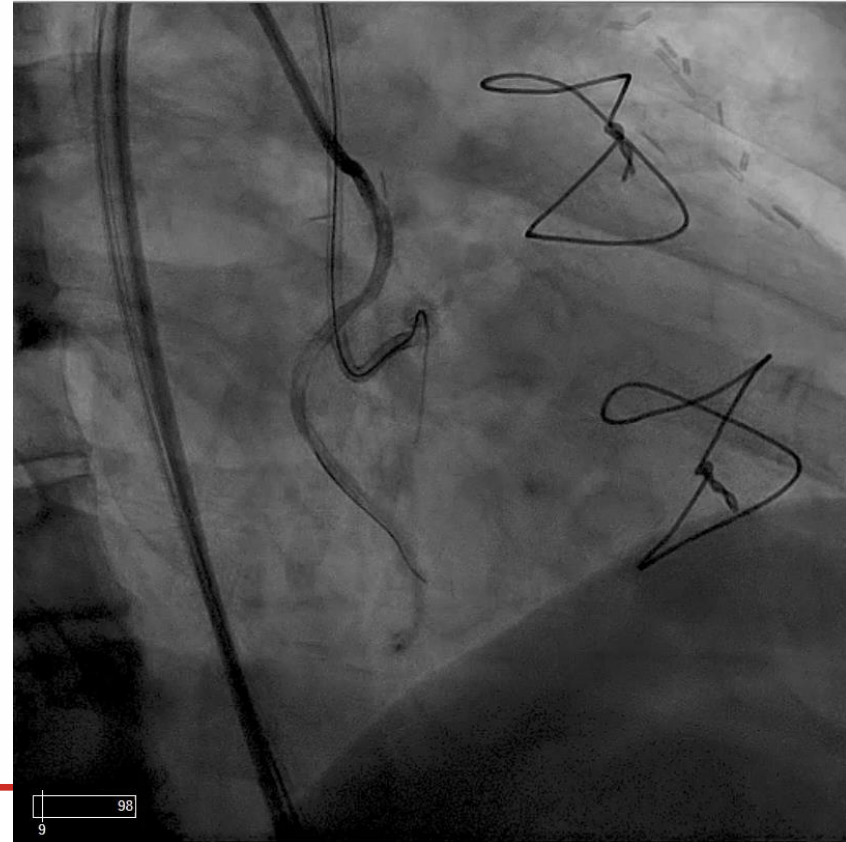
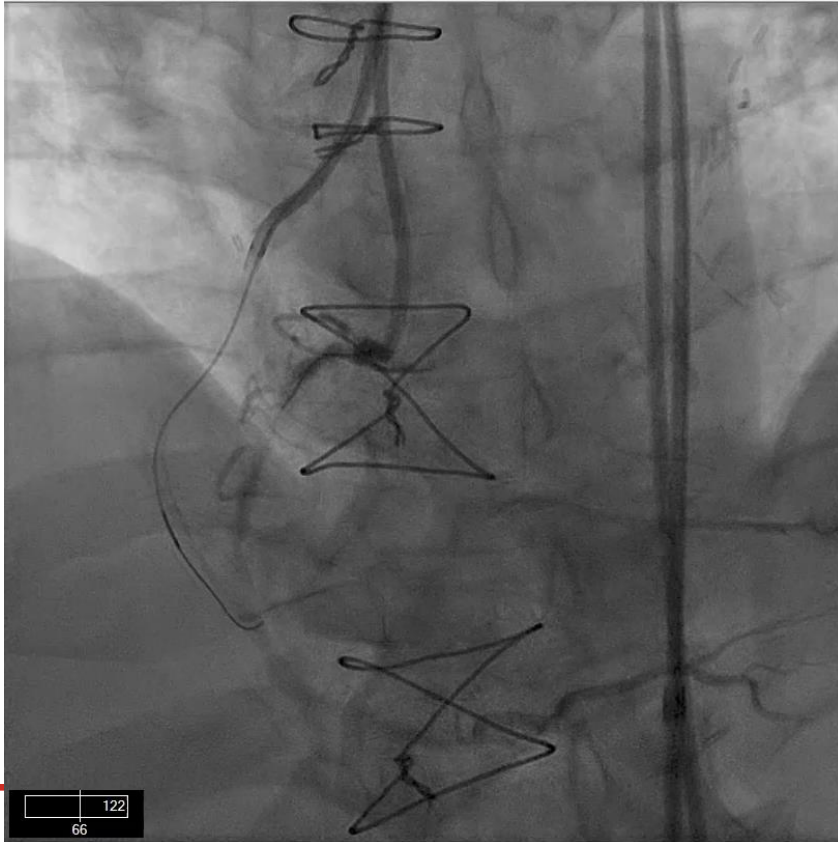
- 60M referred for a second opinion regarding management of complex CAD
- PMH
  - Htn
  - Dyslipidemia
  - CABG surgery in 2010 with SVG to RCA, LIMA to LAD
- Recently told his Cardiologist at nearby University hospital that he had developed CCS class III chest pain and NYHA class III dyspnea on exertion
  - These symptoms persisted despite placing him on optimal medical therapy
- Echo with LVEF 40%, no significant valvular disease
- Sent for nuclear stress test → high-risk inducible ischemia in inferior distribution
- Sent for diagnostic coronary angiogram which showed degenerating graft to RCA in setting of dominant RCA CTO → referred to my center



**SCAI**

Society for Cardiovascular  
Angiography & Interventions

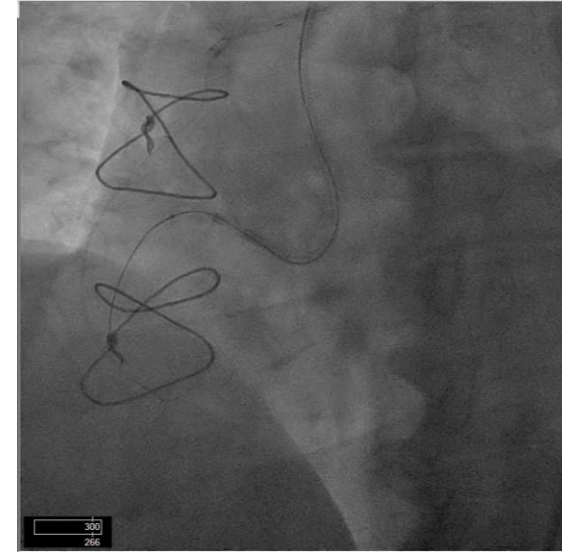
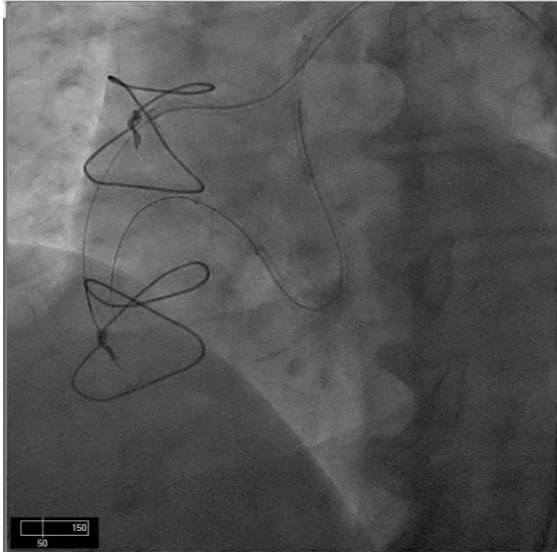
# Roto Case 3: Wire Across, Gear Won't Go



**SCAI**

Society for Cardiovascular  
Angiography & Interventions

# Wire Across, Gear Won't Go



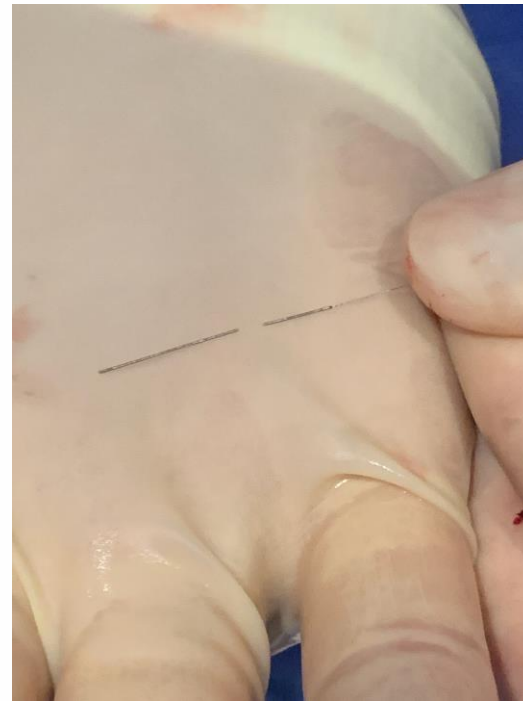
1. Increase guide support
2. Small balloon inflations
3. Balloon-assisted microdissection (BAM)
4. Switch to smaller profile microcatheter
5. Switch to stiffer microcatheter
6. Laser atherectomy
7. External cap crush
8. Modified Carlino
9. Deliver a short roto wire and perform rotational atherectomy
10. Go retrograde
11. See wire impenetrable cap algorithm

Wire across, gear won't go algorithm



**SCAI**

Society for Cardiovascular  
Angiography & Interventions



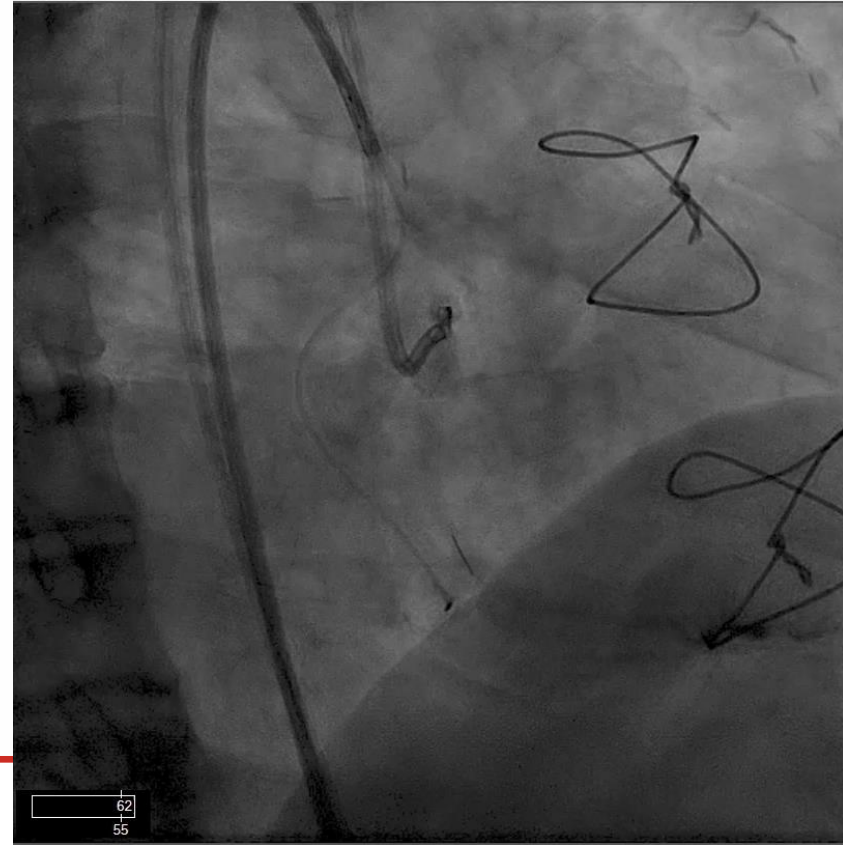
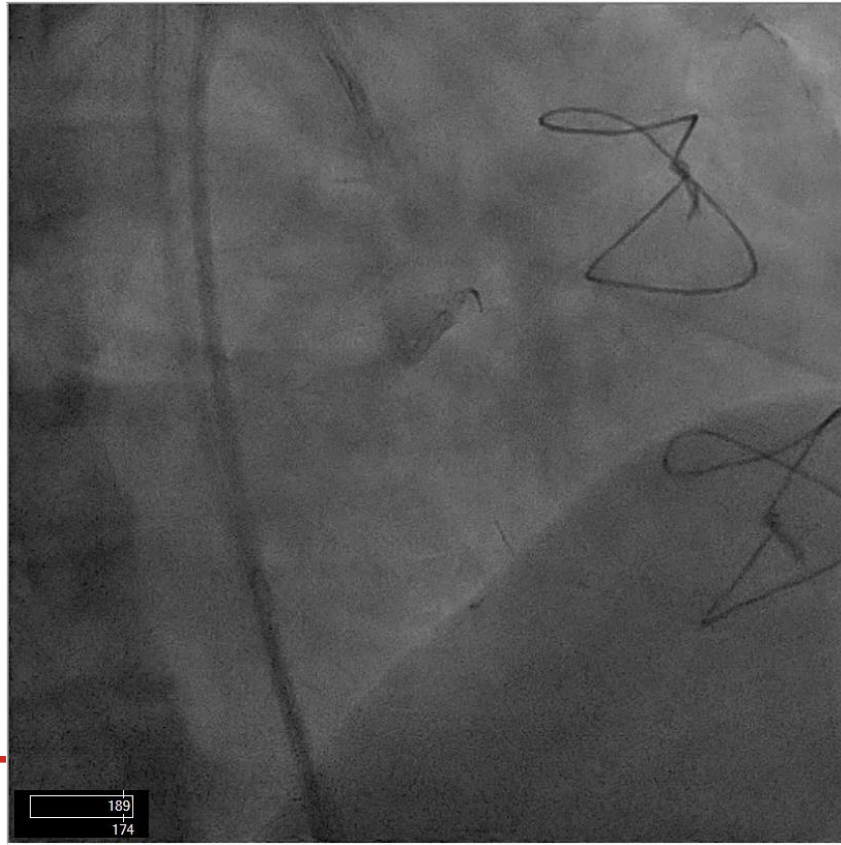
# How to Cut a Roto Wire



**SCAI**

Society for Cardiovascular  
Angiography & Interventions

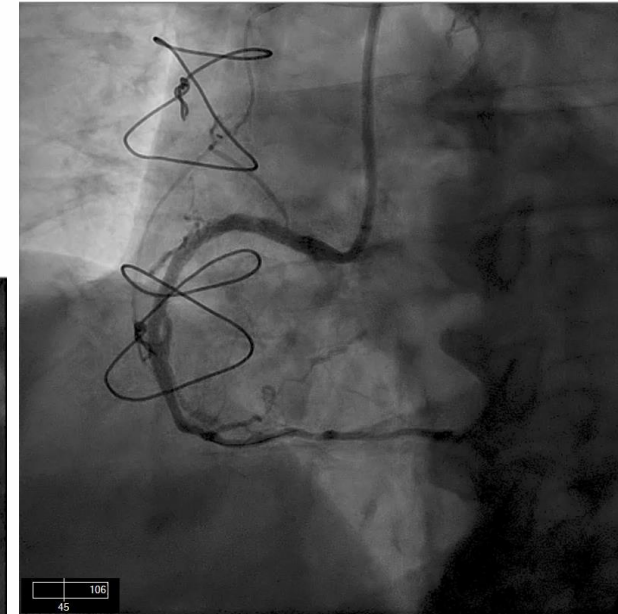
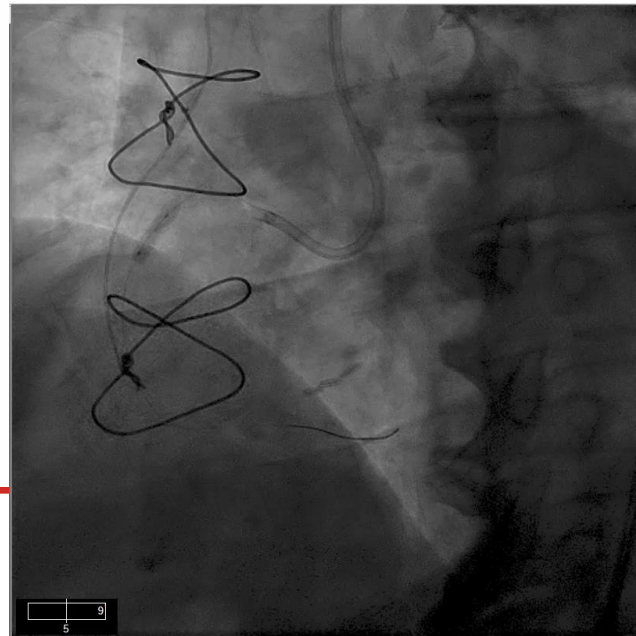
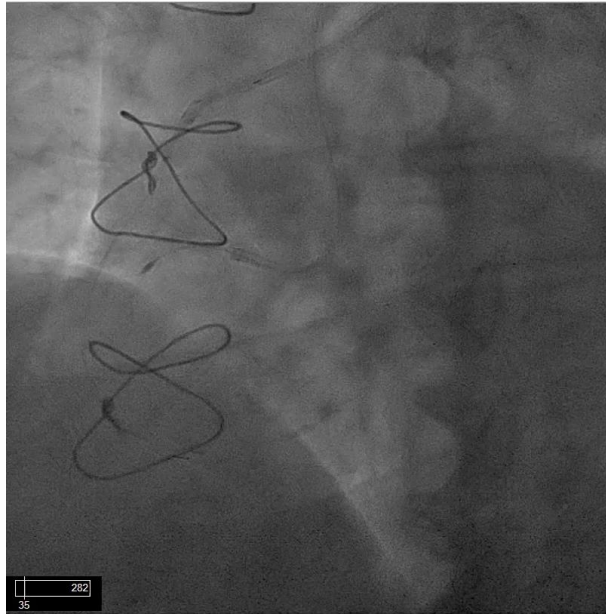
# Wire Across, Gear Won't Go



**SCAI**

Society for Cardiovascular  
Angiography & Interventions

# Wire Across, Gear Won't Go



**SCAI**

Society for Cardiovascular  
Angiography & Interventions